



INVEST 90L BRIEFING

2:30 PM EDT
Thursday, May 24, 2018

Prepared by:
Donal Harrigan

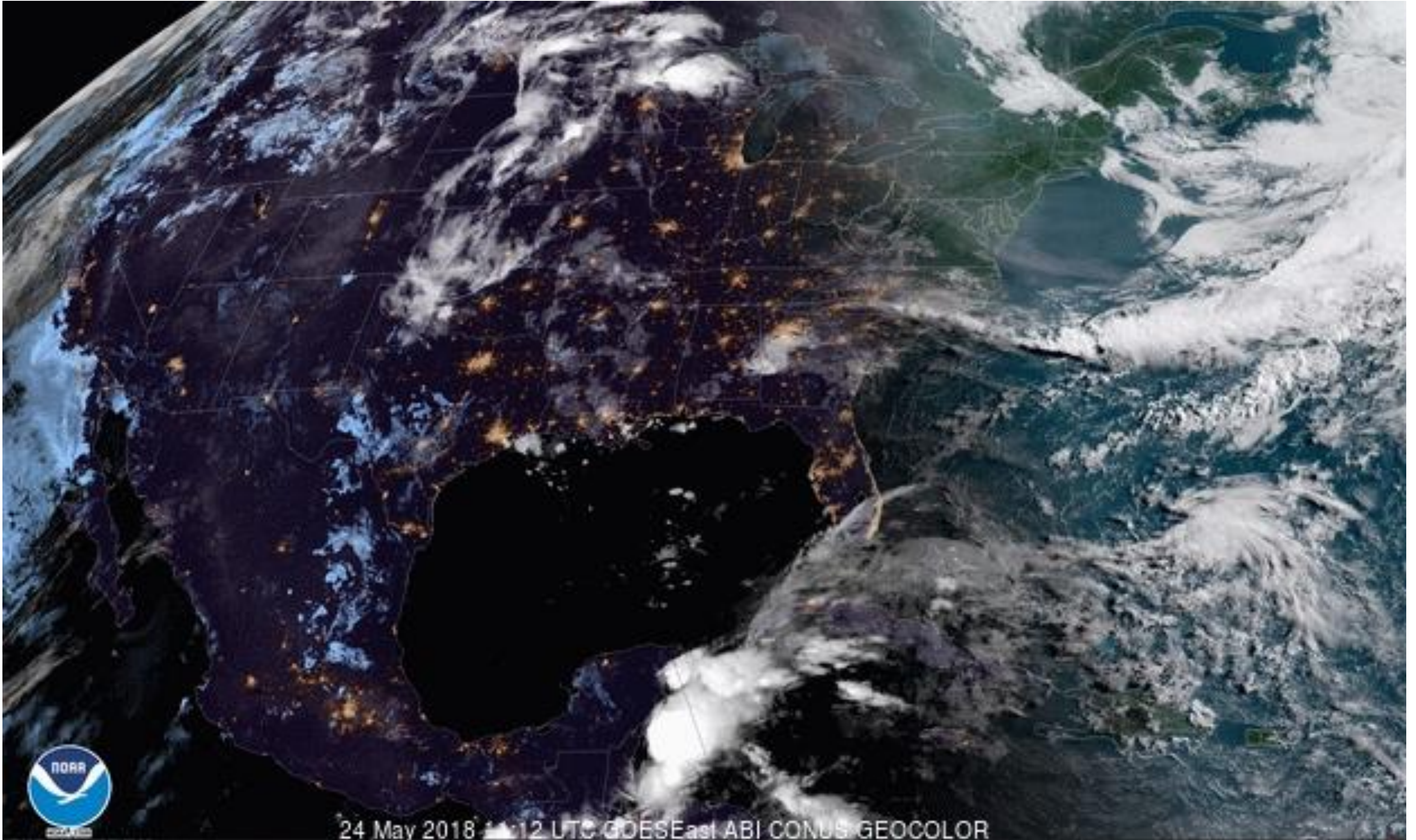
Current Satellite View



Tallahassee

WEATHER FORECAST OFFICE

Invest 90L



Current Forecast

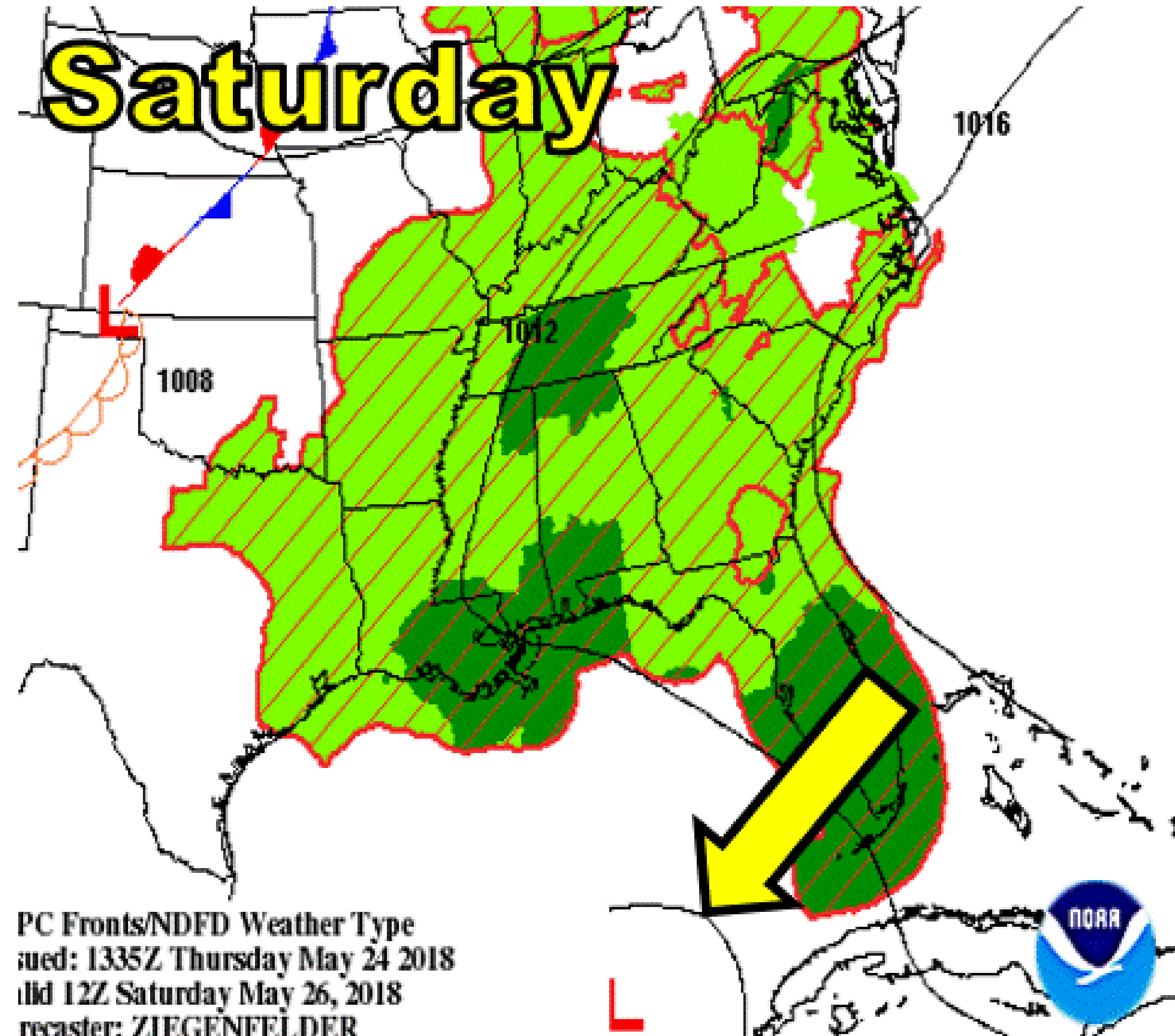


Tallahassee

WEATHER FORECAST OFFICE

Invest 90L

Saturday



Invest 90L will move into the Gulf of Mexico Friday night, reaching the Gulf Coast by Sunday night.

Impacts felt beginning on Saturday night.

Slow movement near and after landfall will result in heavy rain and a potential for flash flooding.

PC Fronts/NDFD Weather Type
issued: 1335Z Thursday May 24 2018
valid 12Z Saturday May 26, 2018
recaster: ZIEGENFELDER

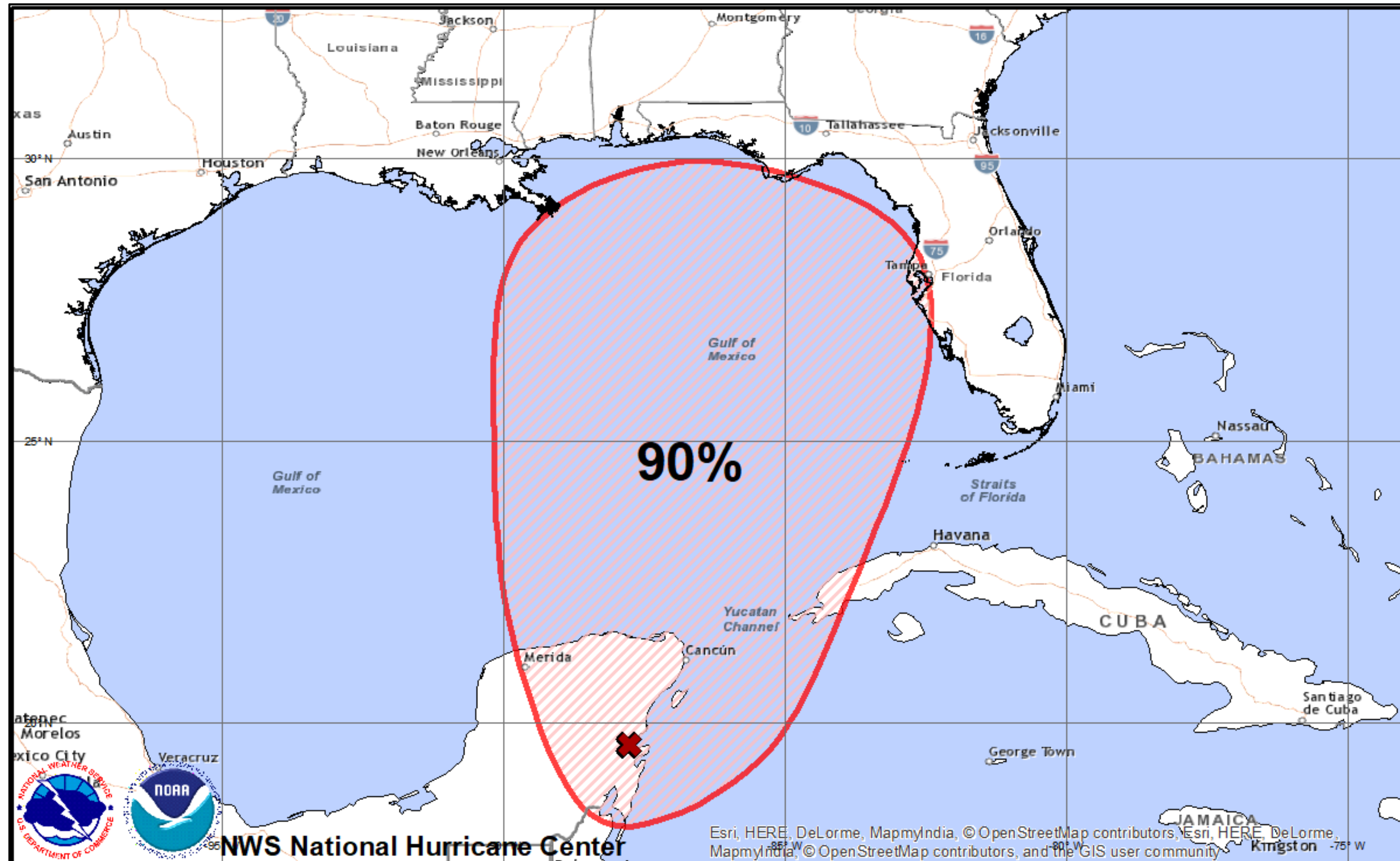
Tropical Weather Outlook



Tallahassee

WEATHER FORECAST OFFICE

Invest 90L



Tropical Weather Outlook Five Day Formation Chances

Thursday May 24, 2018

01:27 PM ET

NWS National Hurricane Center

- High > 60%
- Medium 40-60%
- Low < 40%

X indicates disturbance location;
shading indicates potential formation area.

Expected Storm Total Rainfall



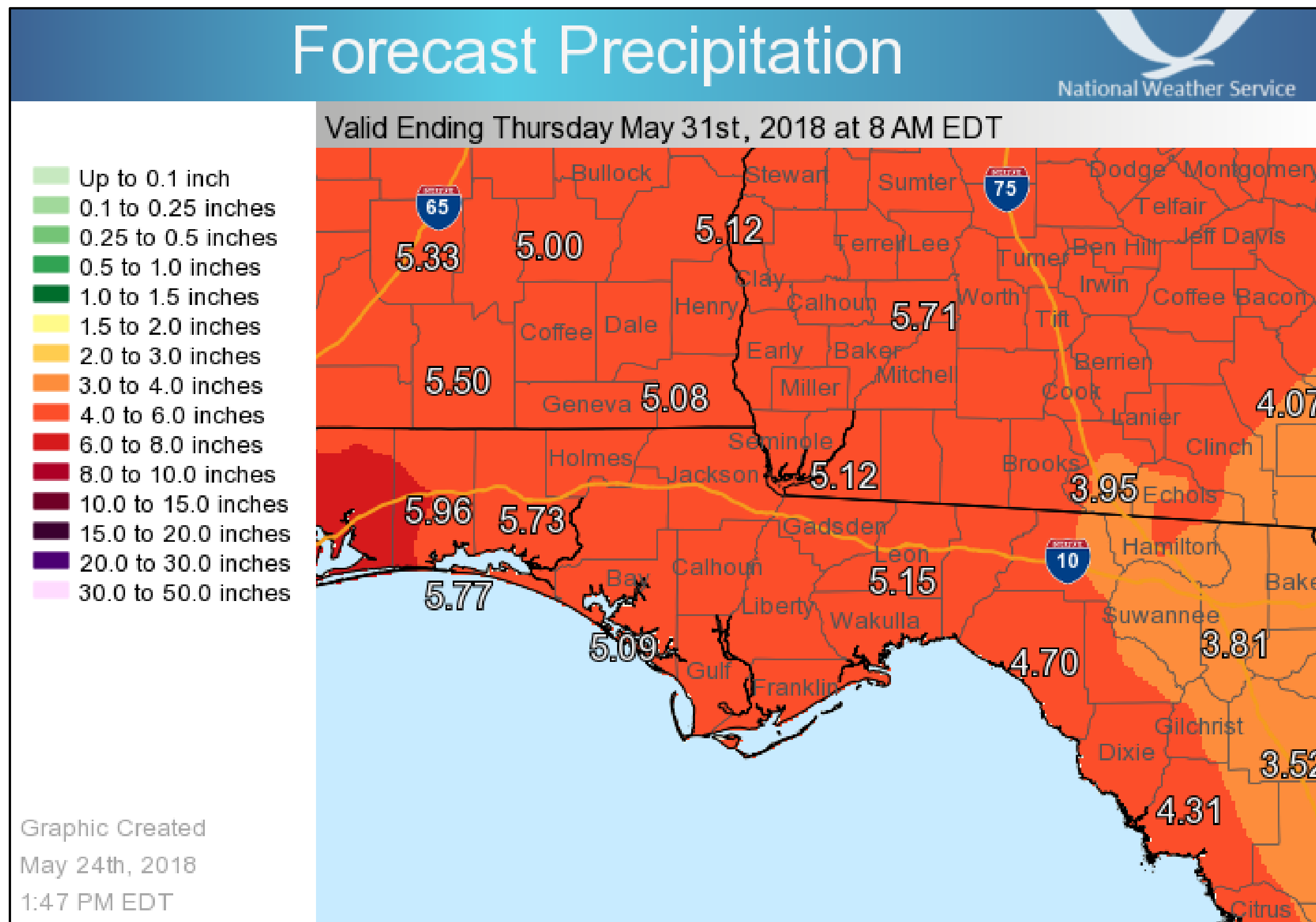
Tallahassee

WEATHER FORECAST OFFICE

Invest 90L

- Storm total rainfall forecast valid through Thursday
- Locally, most rain over shortest time will occur Saturday night

Note: There will likely be locally higher amounts



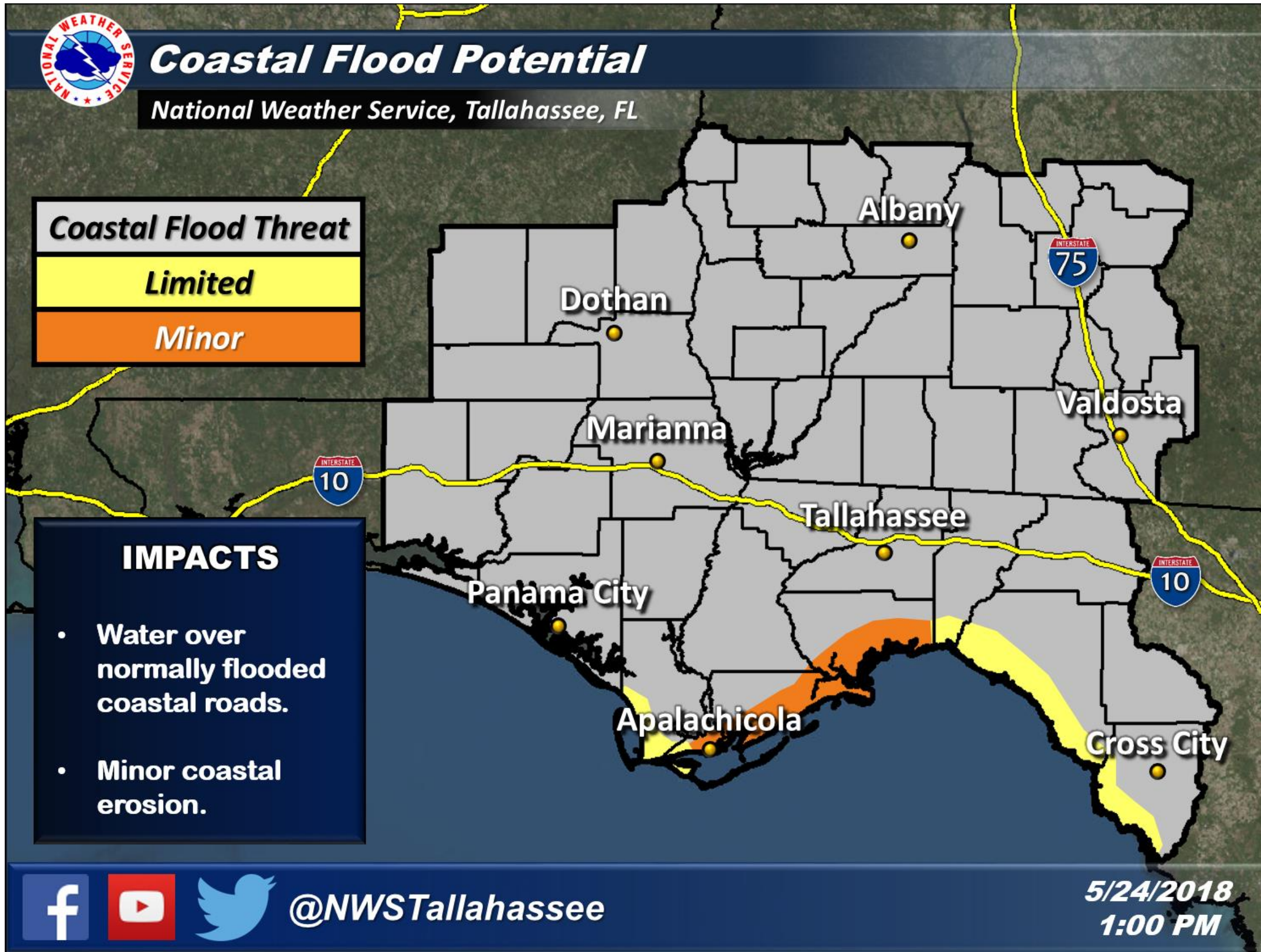
Potential Storm Surge



Tallahassee

WEATHER FORECAST OFFICE

Invest 90L



Areas of greatest risk:

- Coastal Wakulla and Franklin have the greatest threat for impacts.
- Water over flood prone coastal roads.
- Minor coastal erosion.

Timing

- Greatest surge to arrive Sunday morning and afternoon.



- There is a high chance (90%) that storms in the western Caribbean will develop into a tropical cyclone in the next few days.
- Main hazard will be heavy rain, 5-7” on average over the next several days, with higher amounts possible.
- Minor coastal flooding possible, especially along Wakulla and Franklin counties.
- **Watches possible as early as Friday.**



INVEST 90L BRIEFING

Please contact WFO Tallahassee at
850-942-8833 option 9
or through the “TAEchat” NWSChatroom

*The Next Briefing Will Be:
Friday at 2:30 PM EDT*

You can get the latest graphics and information on this storm at www.hurricanes.gov